

Joined-up Retail sector systems & services - by PEL

PEL Services Ltd. powers many different styles of retailers, with planned maintenance and integrated fit-out of a range of electronic systems.

From High Street to Retail Park, air-side to pop-up store, PEL applies six disciplines in just the right measures to protect and enhance each store, covering Fire, Refuge-Call & Security as readily as Sound, Audio-visual screens, Lighting and Music.

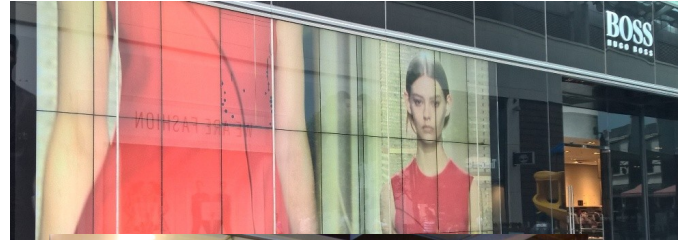
PEL's fleet of Engineers and Project Managers are on the UK roads servicing, fault-solving and doing new store fit-out for retailers including WH Smith, B&Q, Marks & Spencer, Hugo Boss and Debenhams, as well as RUSH Salons.

PEL's Studio provides programmed licensed music & media to River Island, Debenhams, Zizzi Restaurants and The Entertainer toy shops.

PEL's Audio-visual pioneers create experience-enhancing high-bright video-wall, lighting and sound installations for River Island, Hugo Boss and destination or flagship stores across Europe.

For sales information please contact PEL Services Ltd on **0333 123 2100**

or go to www.pel.co.uk



Assessed to ISO 9001
LPCB Ref. No. 981



LPS 1014 Certificated Fire Detection &
Alarm System Firm. Certificate No. CFA-179

